

# **SCHOOL IMPROVEMENT PLAN - 15/16**

**MILLBURN MIDDLE SCHOOL  
SEPTEMBER 14TH, 2015**

# School Improvement Plan

- \* Highlights areas that have been improved
- \* Recognizes areas that need improvement
- \* Shows plan for continued improvement
- \* Focus on Academics, Climate, Communication, Facilities / Finance

# Academics - MMS

- \* Focus on higher scores on NWEA measured by student growth in Reading and Math
- \* Linking Science and Social Studies to NWEA reading scores with emphasis on non-fiction reading skills
- \* New Math curriculum
- \* Added instructional Math minutes in 6th grade 14-15 and 7th grade 15-16
- \* Math instructional assistance in study hall (8th grade)
- \* Let's take a look at progress of Curriculum Committees...

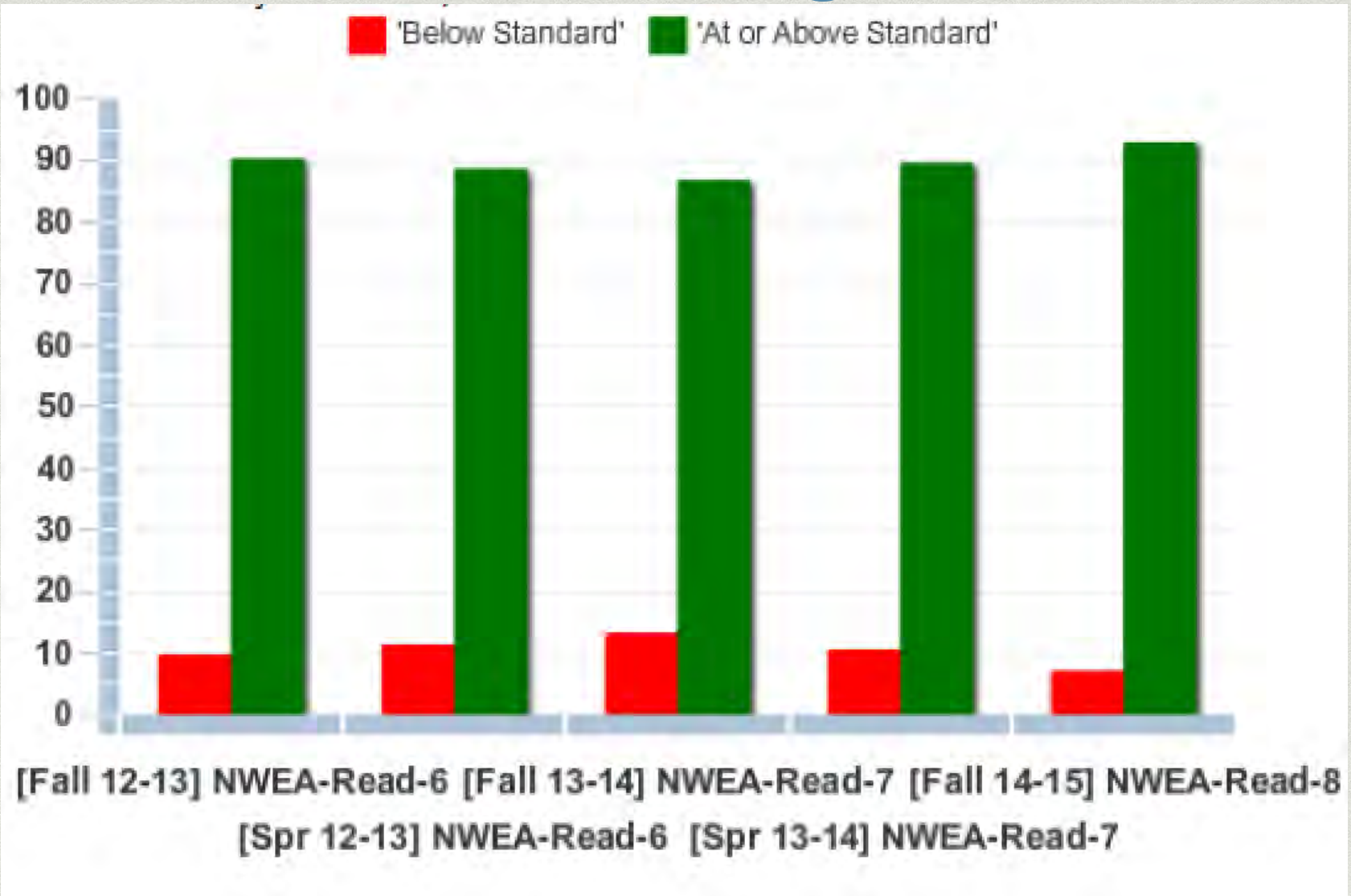
# Academics - MMS

- \* Curriculum Committee Work towards CCSS
  - \* Instructional staff taking active lead in committee work
  - \* Math: fully aligned to standards, new curriculum adoption 14/15, online component, text online, tutorials, leveled into H.S., piloting engineering component in 7th Grade Math/AIM (STEM)
  - \* ELA (Reading): fully aligned to standards, same unit template used between grade levels, fine tuning and adjust as needed in 15/16
  - \* Science: organized units between grade levels, alignment to CCSS is nearing completion, curriculum is largely teacher generated until text or other resource adoption is available
  - \* Social Studies: new standards made available in June, will begin process of alignment during 15/16 school year

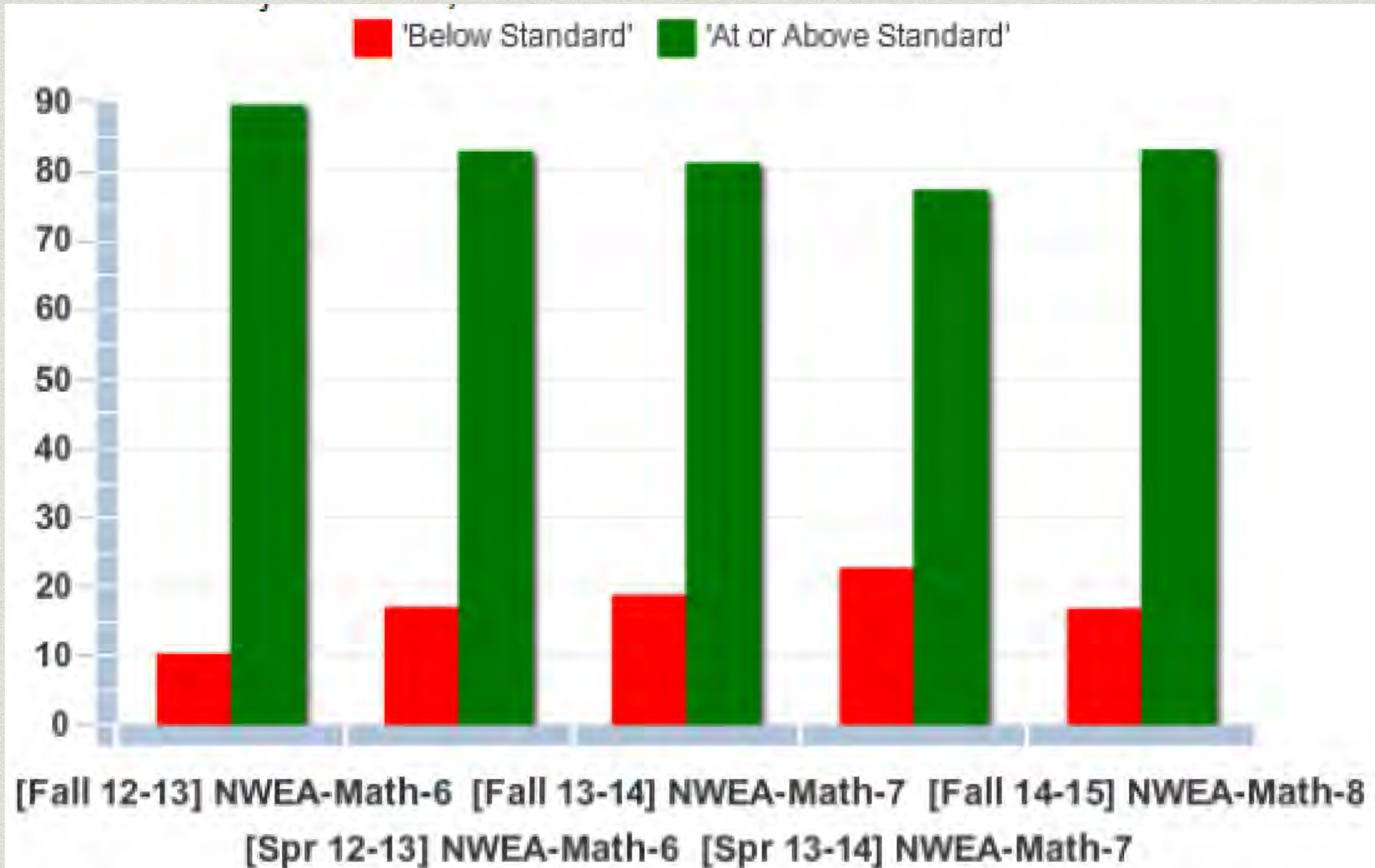
# Academics - MMS

- \* Work on curriculum alignment will continue into 15/16 with final adjustments being made in most content areas
- \* Continued investigation on teaching materials, texts, other resources
- \* Let's take closer look at some historical NWEA averages in Math and Reading and a quick look at how the BOE has supported academic improvements

# Last Year's 8th Grade Cohort - Reading



# Last Year's 8th grade Cohort - Math



# Observations and Improvements

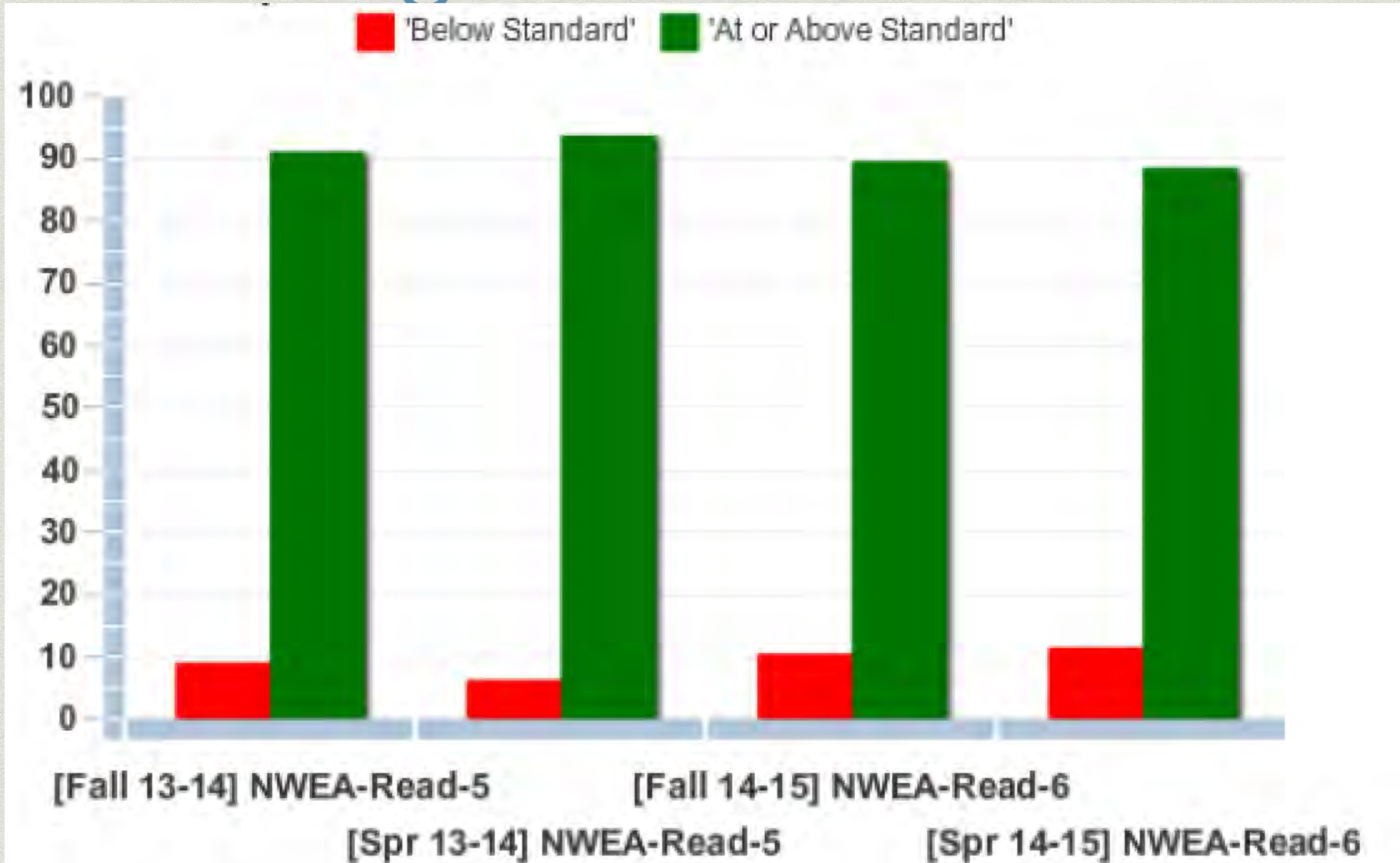
- \* Reading scores solidly above 80%, slight dip 6th to 7th, ending with greater % from 6th to 8th grade
  - \* Continued ELA committee work towards alignment to CCSS
  - \* Lower class size
- \* Math scores generally around 80%, noted dip from 6th to 7th grade, ended with lower % 6th to 8th grade
  - \* Added instructional minutes to Math in 6th grade
  - \* Started new curriculum
  - \* Lower class size
- \* Let's take a look at the School Boards Involvement in academic improvements...



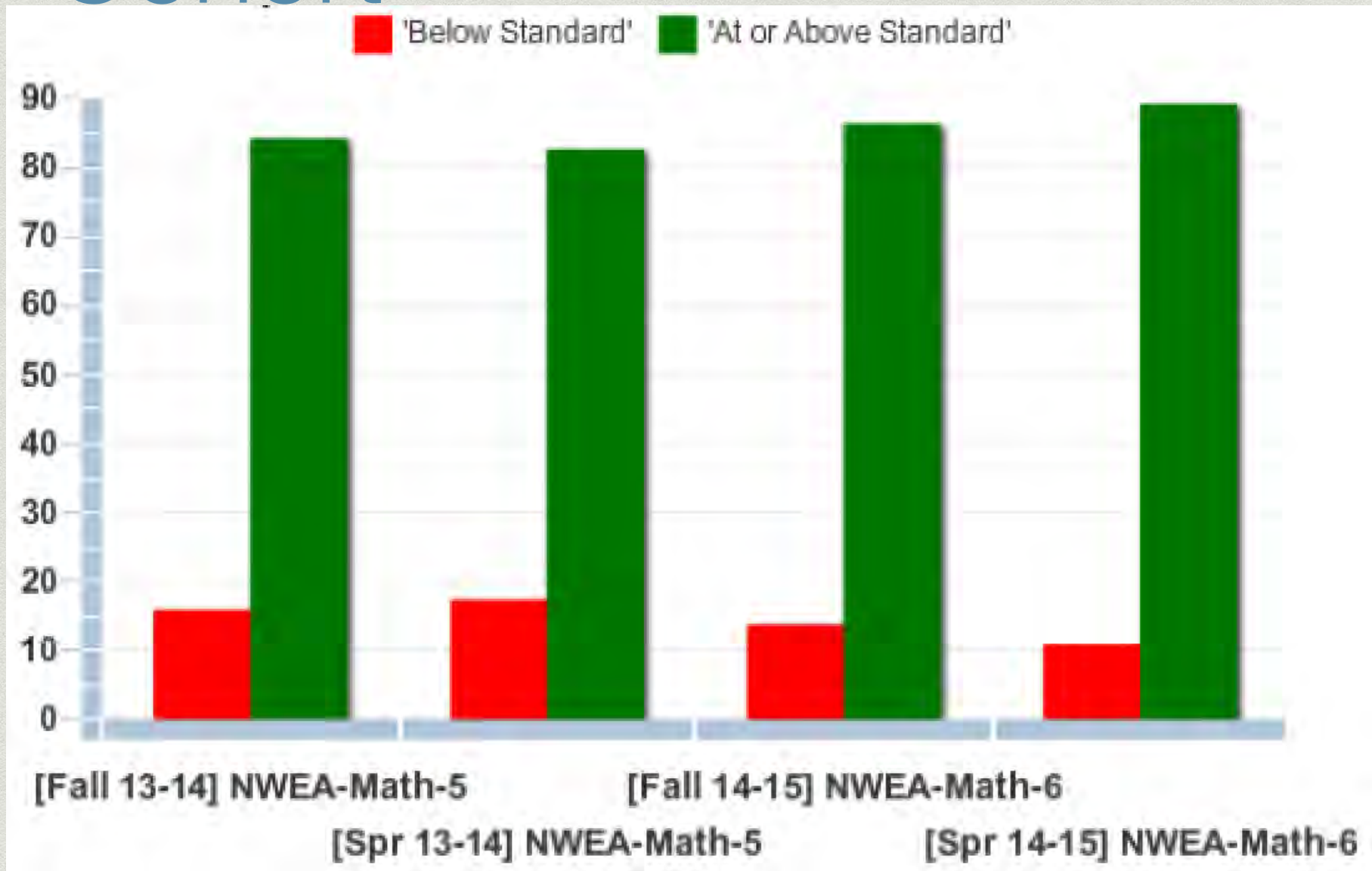
# School Board Involvement

- \* Approved hiring additional 7th grade teacher
- \* Approved hiring additional 8th grade teacher
- \* Supported staffing needs that allowed increase in math instructional minutes for 6th grade
- \* Supported use of personnel to provide math support during study halls in 7th and 8th grade
- \* Next few slides will illustrate improvements using last year's 6th grade cohort (current 7th grade class)

# Last Year's 6th Grade Reading Cohort



# Last Year's 6th Grade Math Cohort



# Improvements for 15-16 Reading

- \* Aligned curriculum to CCSS in place
- \* Same unit template used across grades
- \* Science and Social Studies using non-fiction reading skills, vocabulary exposure to help support ELA scores
- \* Monthly meetings to review student performance and plug in academic support as needed

# Improvements for 15-16 Math

- \* Continued application of CCSS and new curriculum adoption across grade levels
- \* Progression of increased math minutes into 7th grade (82 minutes)
- \* Math support in study hall and larger sized math class (8th grade)
- \* Monthly meetings to review student performance and plug in academic support as needed

# Academics - MMS

- \* A deeper review of our NWEA data looks at the number of students scoring at or above the 67th percentile
- \* 67th percentile is used by NWEA to show the number of kids that have a high probability of being prepared for college and careers
- \* Based on NWEA's national norming of the tests, 33% of students in their norming study scored at or above the 67th percentile
  - \* Millburn Middle School had 56% of students at or above 67th percentile in Reading and 50% in Math last school year
  - \* Well above national norm of 33%
  - \* Next slides will show an illustration of these numbers as well as a comparison of how we are doing over time

# NWEA 67th Percentile or Above - Reading 14/15

Grade	Fall	Spring	%	Total
6th	98	93	55%	-5
7th	104	110	59%	6
8th	105	105	55%	0
Total	307	308	56%	1

- We have 56% of students scoring at or above the 67th percentile
- 23% more than national norms (33%)
- Goal is to increase number of students that move above 67th percentile

# NWEA 67th Percentile or Above - Math

Grade	Fall	Spring	%	Total
6th	72	92	54%	20
7th	87	91	49%	4
8th	91	89	47%	-2
Total	250	272	50%	22

- We have 50% of students scoring in the at or above the 67th percentile
- 17% more than national norms (33%)
- Note the increase of students in 6th grade



# Improvements for 15-16 Reading and Math

- \* Principals have been evaluated based on student growth for the last two years
- \* Teachers will be trained this year in setting and achieving growth targets for students (part of evaluation in 16-17)
  - \* Rigorous, attainable, occur over time, use baseline data (Fall Math NWEA scores), specific instruction towards growth target, midpoint data check for progress, evaluation of results
  - \* Professional development and committee work last year, over the summer and into this school year
- \* Results will have positive impact on % of students at or above 67th percentile

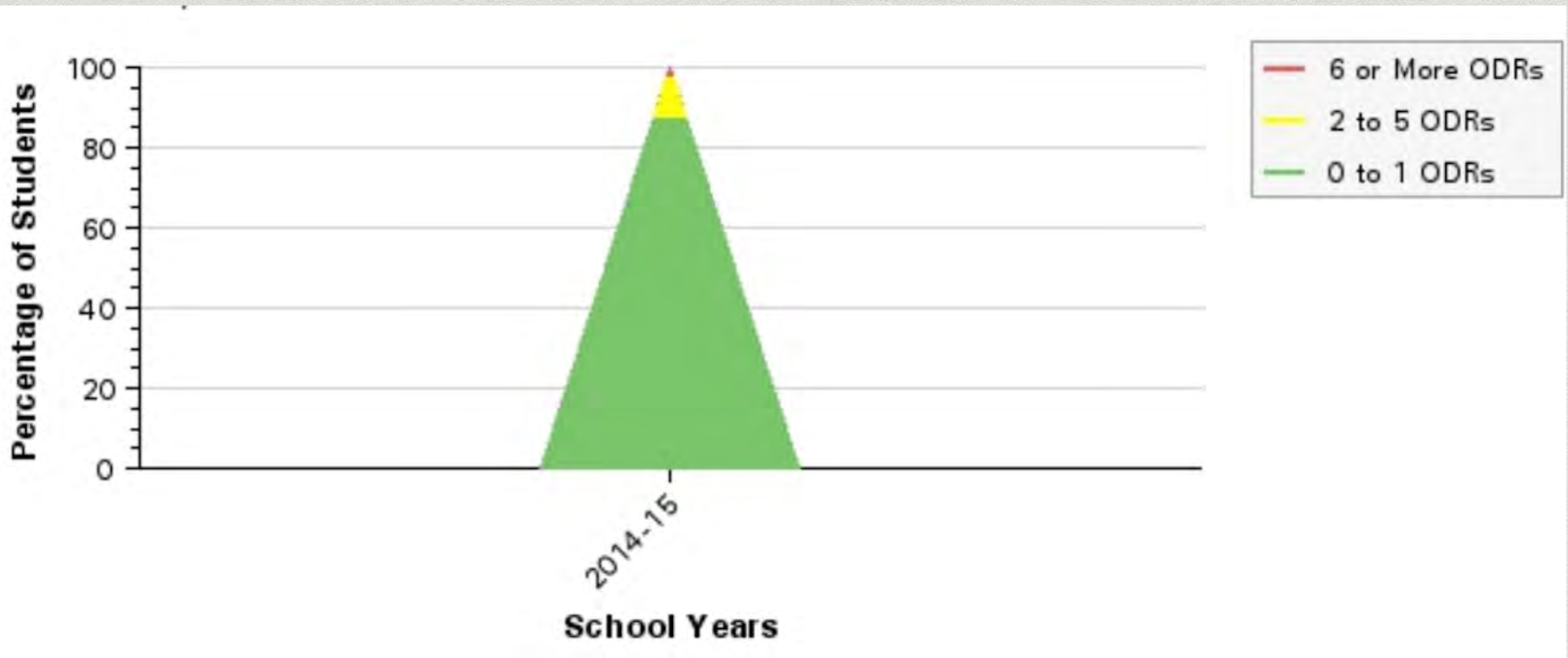
# Climate - MMS

- \* Professional communication with staff weekly through Middle School Representation Meetings
- \* Recognize staff monthly at regular Faculty Meeting selected by peers
- \* Strive to be visible, approachable, supportive, responsive and available to staff

# Climate - MMS

- \* Positive Behavior Interventions and Supports (PBIS)
  - \* 5th year of implementation
  - \* Brings our focus on teaching and learning
  - \* Recognize Student and Citizen monthly
  - \* Re-teach area expectations monthly
  - \* Classroom raffles, share referral data, invite parents to student recognition events

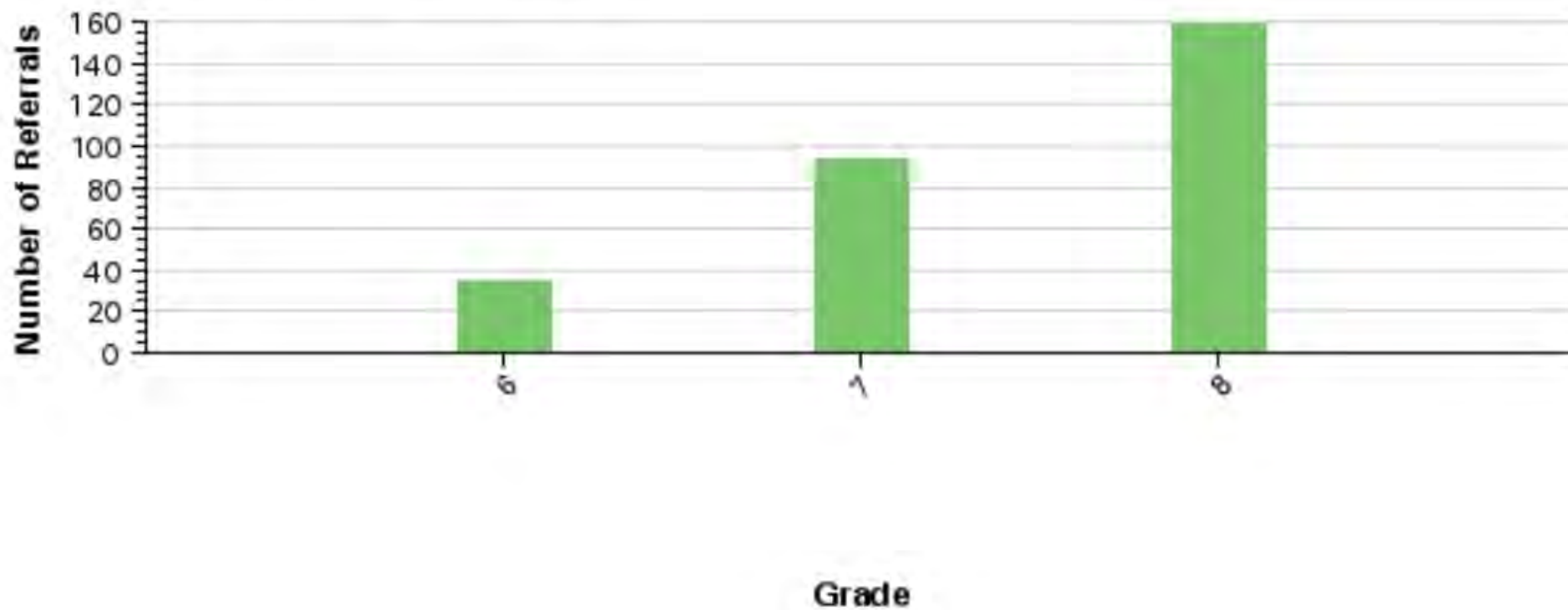
# Referrals 14-15



# Referrals 14-15

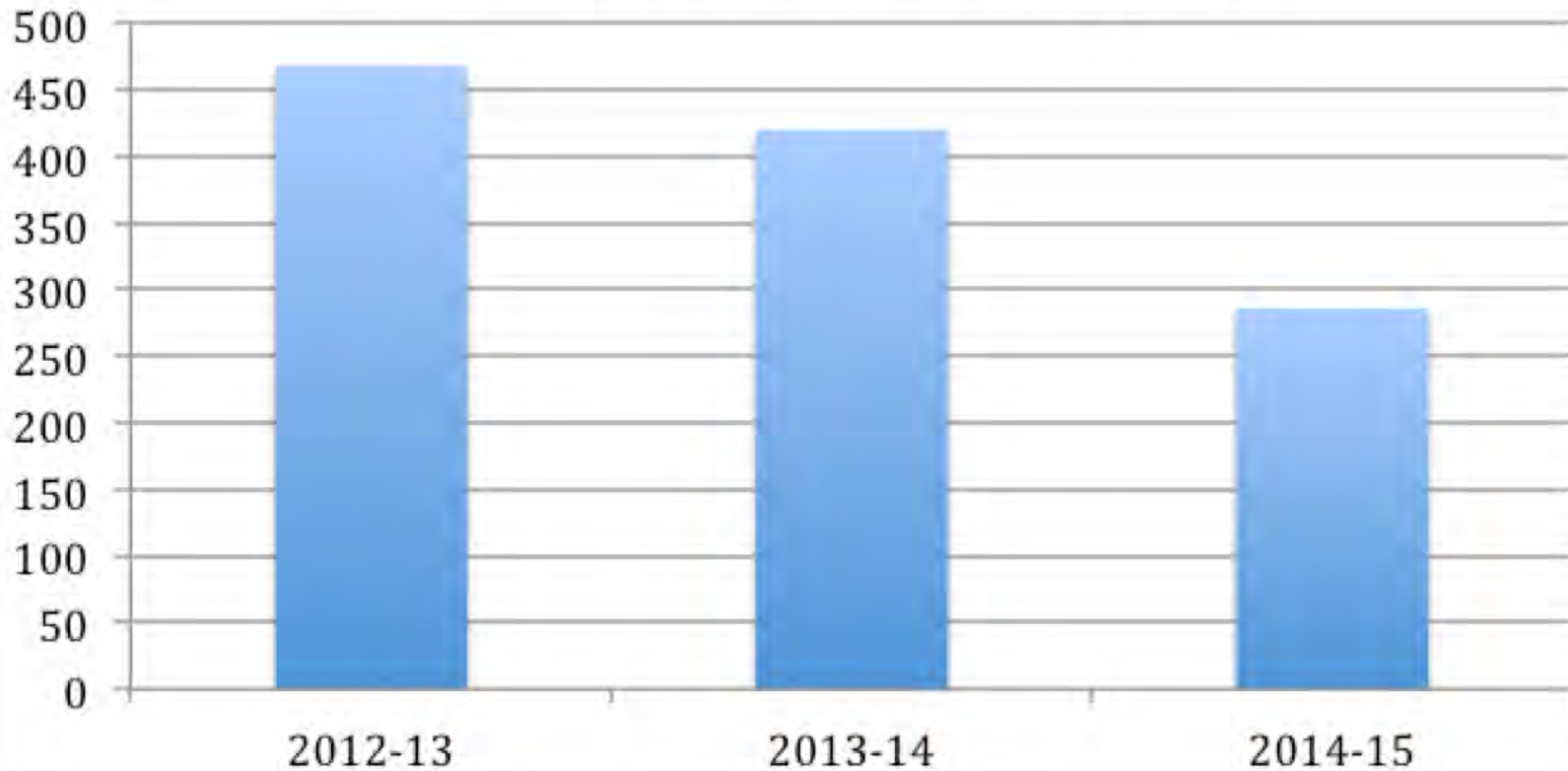
## Referrals by Grade

All, Aug 1, 2014 - Jul 31, 2015



# Referrals - Last 3 Years

## 3 Year Referral Compare



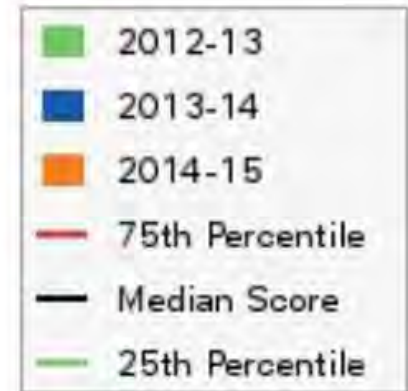
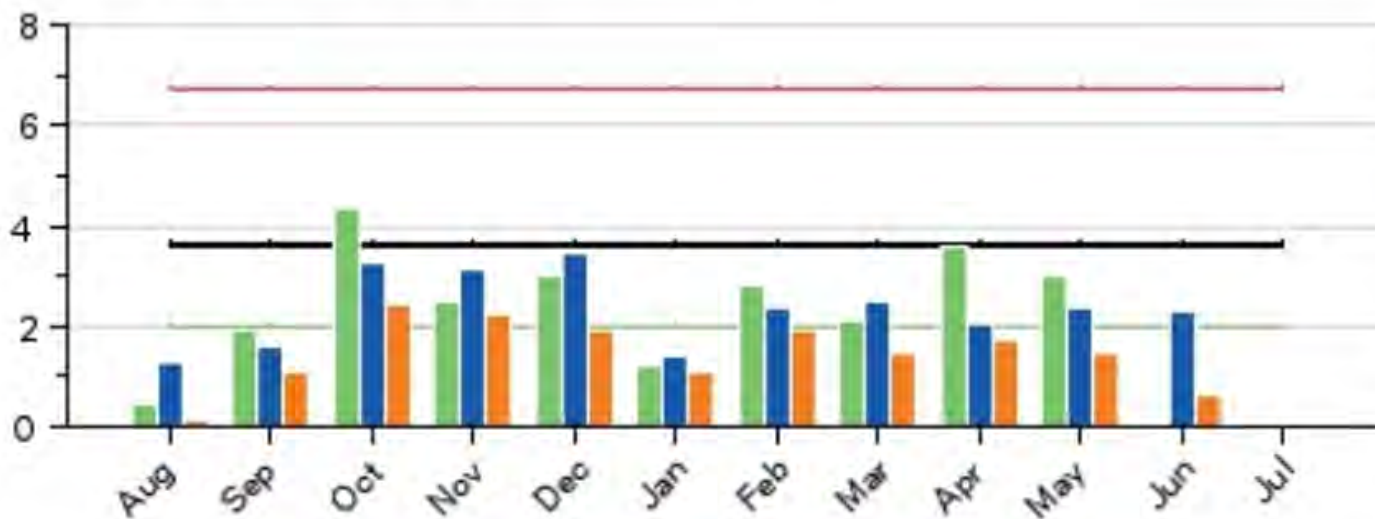
# Referrals - Last 3 Years

## Average Referrals Per Day Per Month - Multi-Year

All, 2012-13 - 2014-15



Average Referrals Per Day



School Months

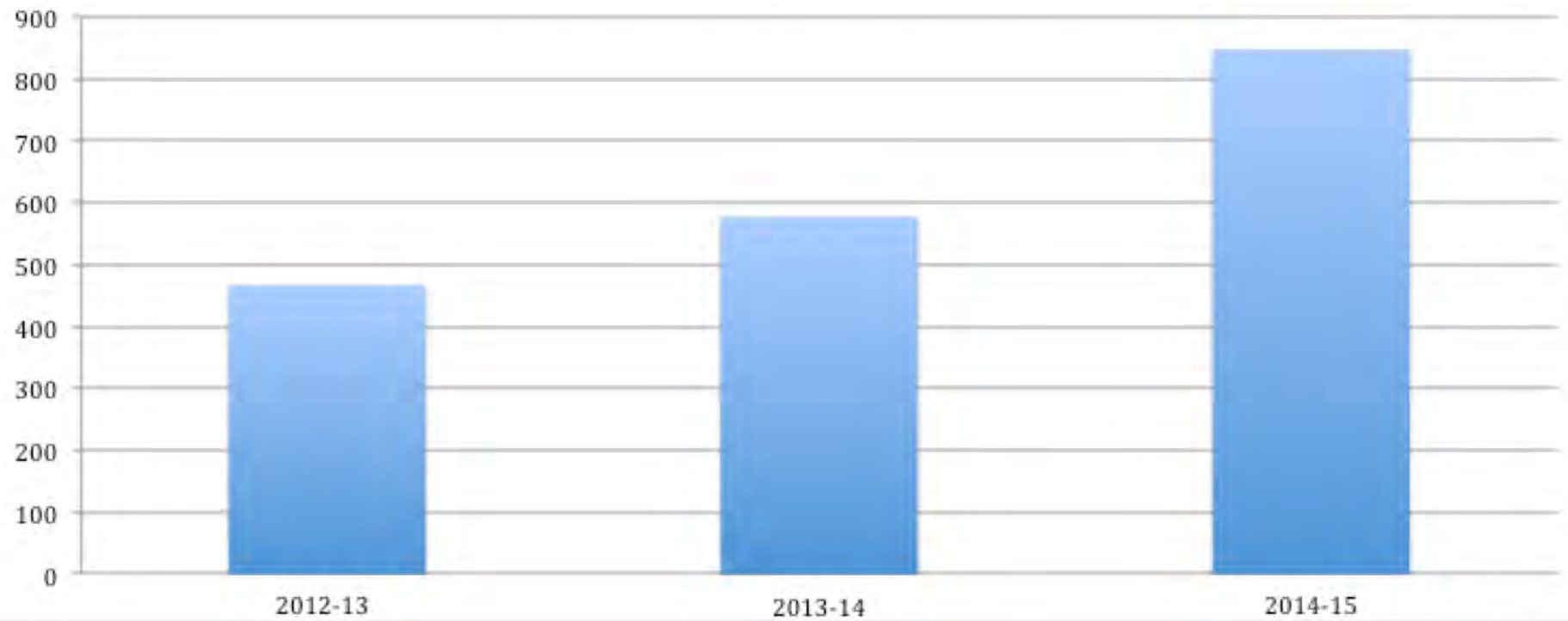
# Climate - MMS

- \* Student involvement in school activity
  - \* Sports, Band, Choir, Theater, Newspaper, Yearbook, Student Council, Homework Hut, Scholastic Bowl, Game Clubs
  - \* Added Dance Team and National Junior Honor Society Chapter 13-14 school year



# Climate - MMS

## Extracurricular Involvement



# Communication - MMS

- \* Weekly principal newsletter
- \* Direct emails to parent as needed.
- \* Parent representation in committees: Graduation, Handbook, Late Pick-Up, others as they arise
- \* Weekly staff representative meetings
  - \* Notes and running calendar emailed to all
  - \* Problem solving, discussion, resolutions

# Facilities and Finance - MMS

- \* Oversight on building budget with Business Office
- \* Maximize staffing resources through scheduling
- \* House building use groups
- \* Ensure building standards are met with custodial staff
- \* Security camera placement and use

# Closing - MMS

- \* The School Improvement Plan is a great tool to show the health of the school. It helps to highlight the areas of strength as well as need.
- \* Millburn Middle School is fantastic building to work in. The teaching and the support staff show tremendous professionalism and dedication to our students.